



*Van der Graaf*

**Power Transmission Equipment**

**Nederland** De Weijert 14

P.O. Box 3

8325 ZG Vollenhove

Tel : 0031 (527) 241441

Fax : 0031 (527) 241488

Email : [info@vandergraafpte.nl](mailto:info@vandergraafpte.nl)

# TM 620A75

Type TM 500A75	Power kW	Beltspeed m/s at 50 Hz				Min. L mm	Full load Curr. 400 V - 50 Hz I = ....A	Weight kg L=850
		Beltpull N						
430 Z	22	3,9	3,1	2,5	2	850	37	700
		5360	6740	8360	10450			
425 Z	18,5	3,9	3,1	2,5	2	850	32	690
		4505	5670	7030	8790			
620 Z	15	2,6	2,1	1,6	1,25	850	31,5	700
		5480	6785	8905	11400			
815 Z	11	2	1,5	1,25	1	850	26	700
		5225	6965	8360	10450			

Available standard facewidth's **850 - 900 - 950 - 1000 - 1050 - 1100 - 1150 - 1400 - 1600 mm**

The total weight of a drummotor grows approx. 38,7 kg per 100 mm.

Other beltspeeds and facewidth's upon request.

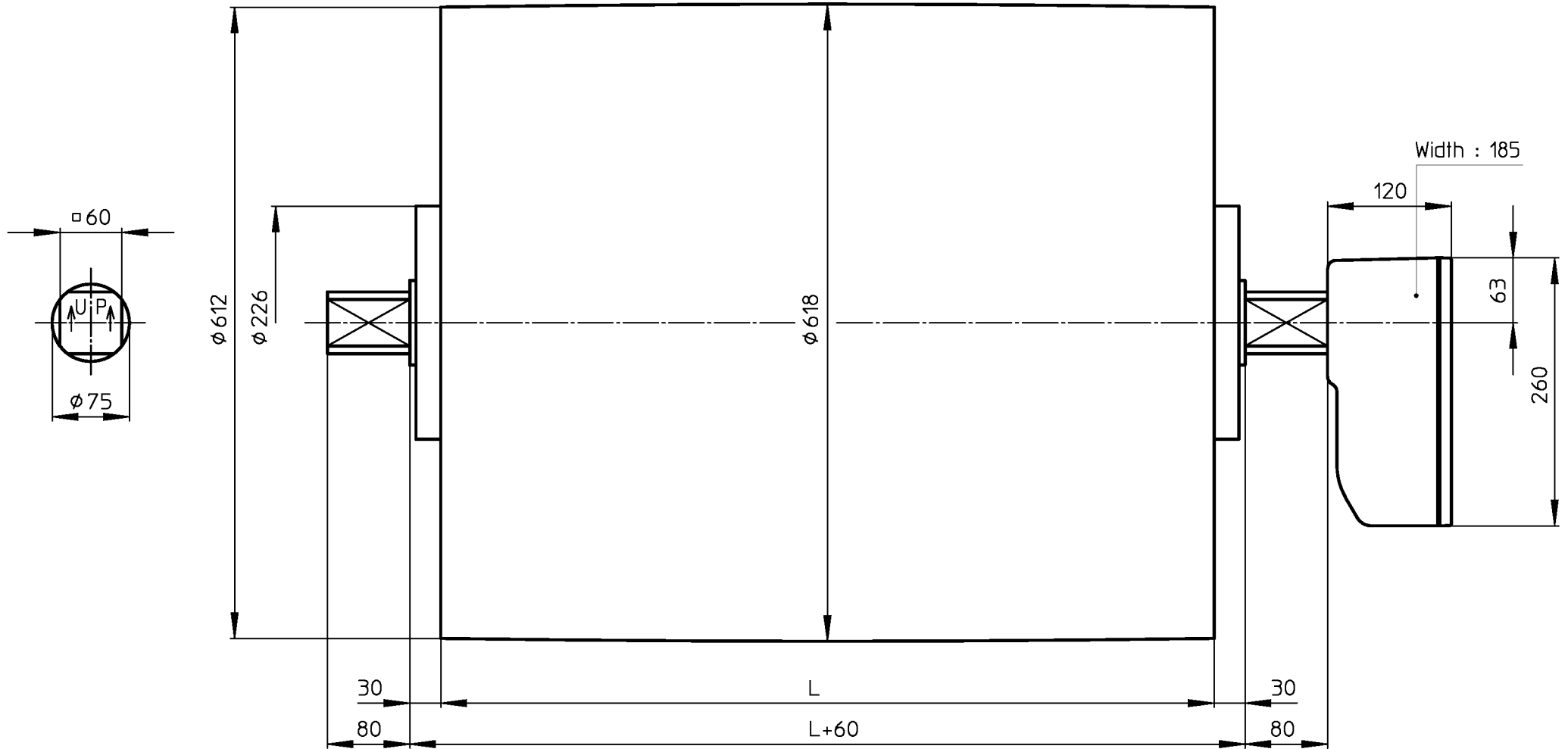
All these drummotors are also available in Stainless Steel - 316

Available torque  $\frac{\text{Beltpull N} \times \text{Drum diameter m}}{2}$  (Nm)

2

# TM620A75

Design A



MS\_TM620A75\_KKGG

12-07-2001



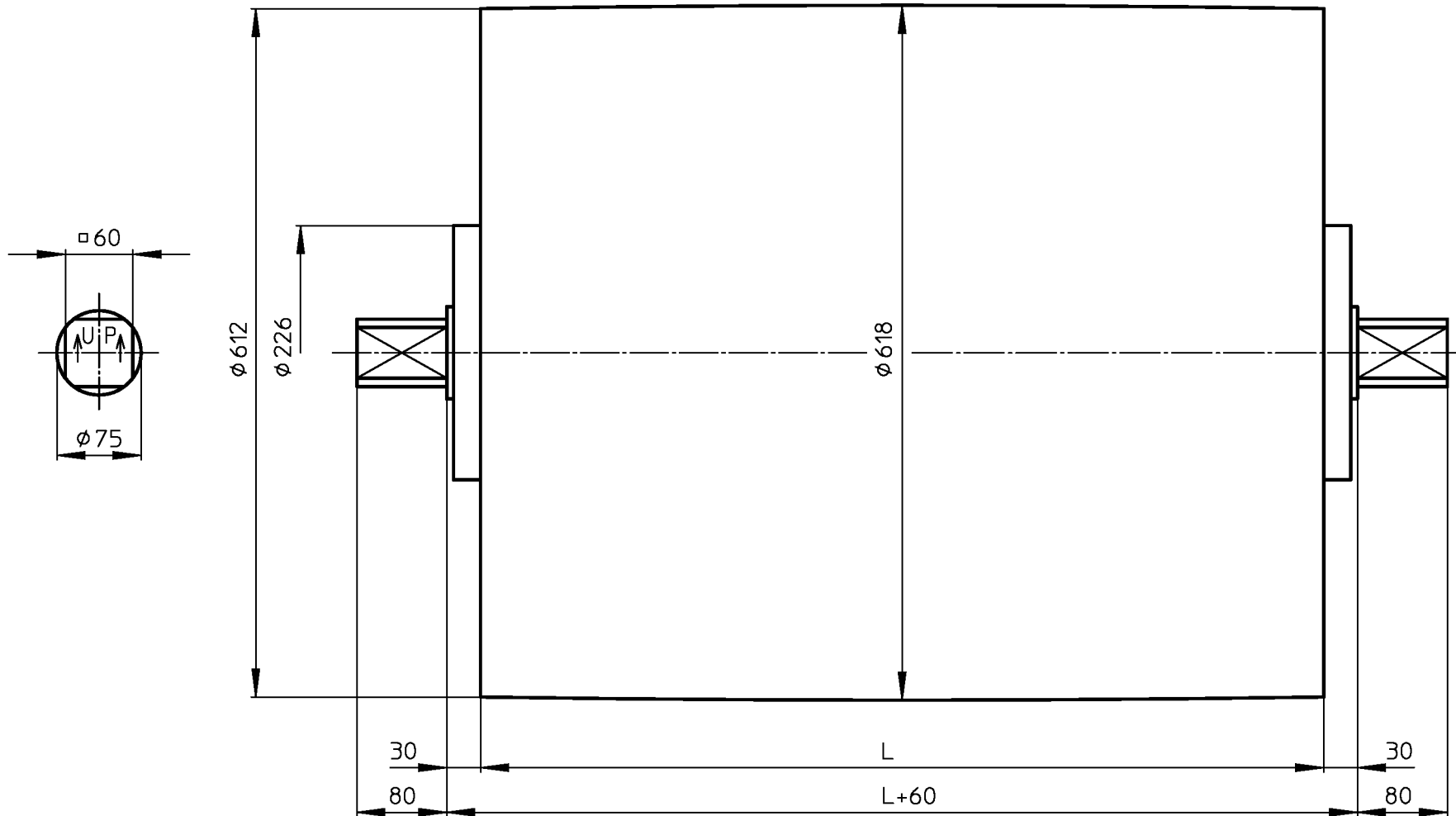
**VAN DER GRAAF B.V.**

VOLLENHOVE-HOLLAND

Telephone :+31(0)527-241441  
Telefax :+31(0)527-241488

# KT620A75

## Design A



MS\_KT620A75

28-10-2002

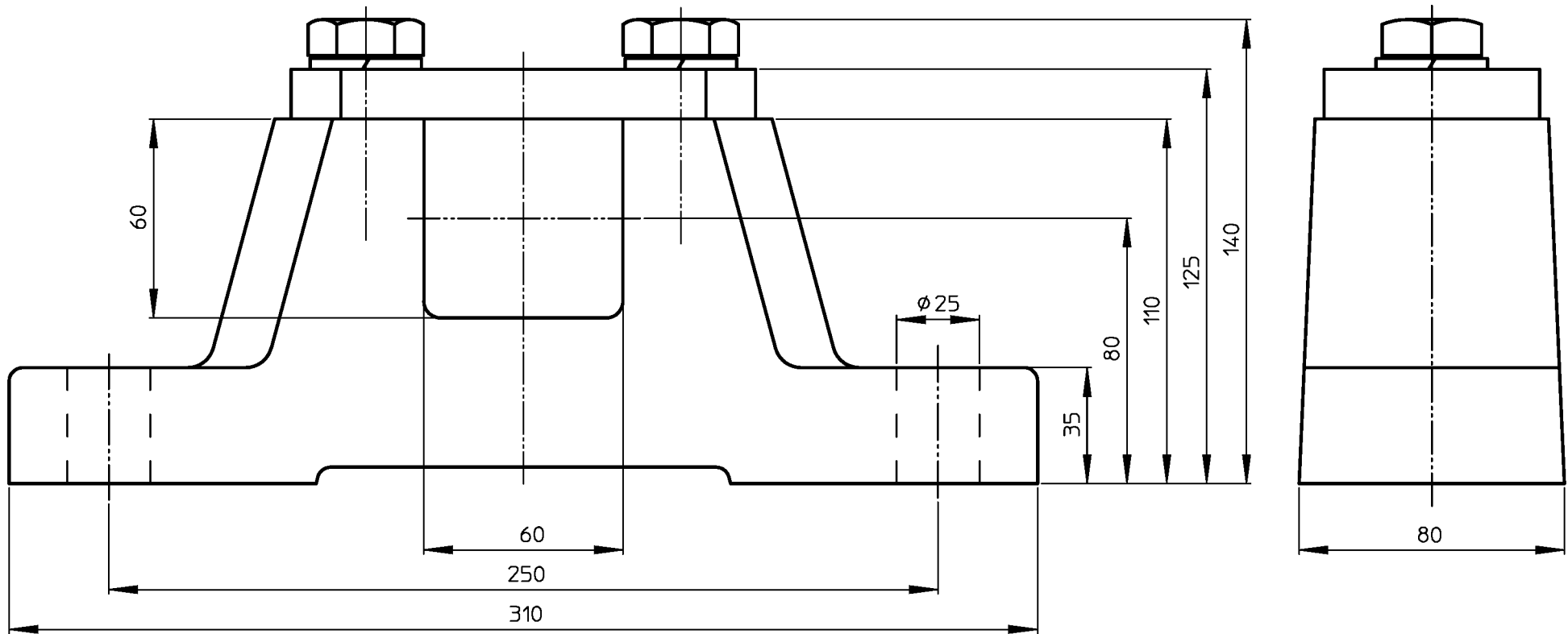


**VAN DER GRAAF B.V.**

VOLLENHOVE-HOLLAND

Telephone :+31(0)527-241441  
Telefax :+31(0)527-241488

# ASBLOK/BRACKET/LAGERBOCK AB75



MS\_AB75

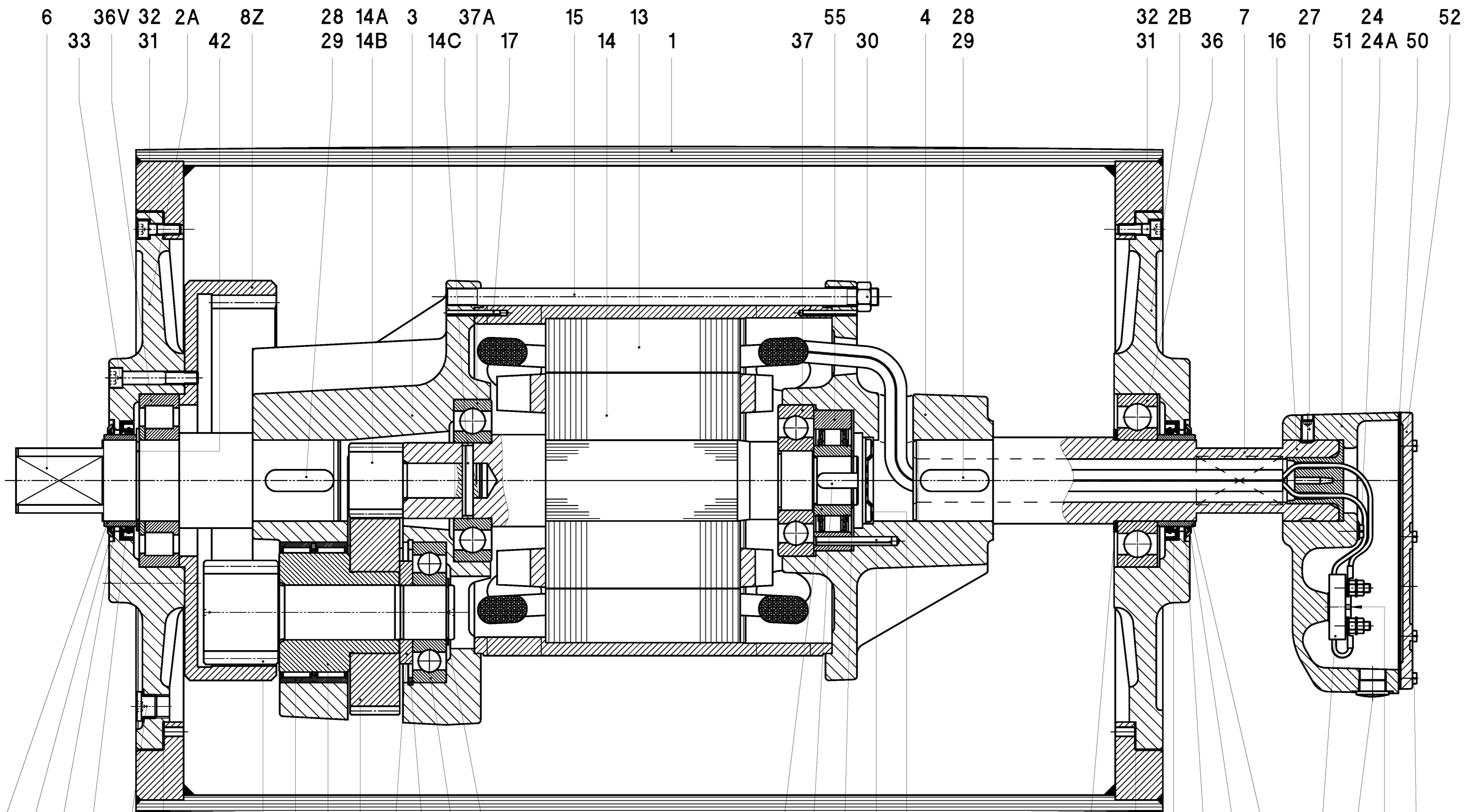
22-07-99



VAN DER GRAAF B.V.

VOLLENHOVE-HOLLAND

Telephone ++31(0)527-244441  
Telefax ++31(0)527-24488



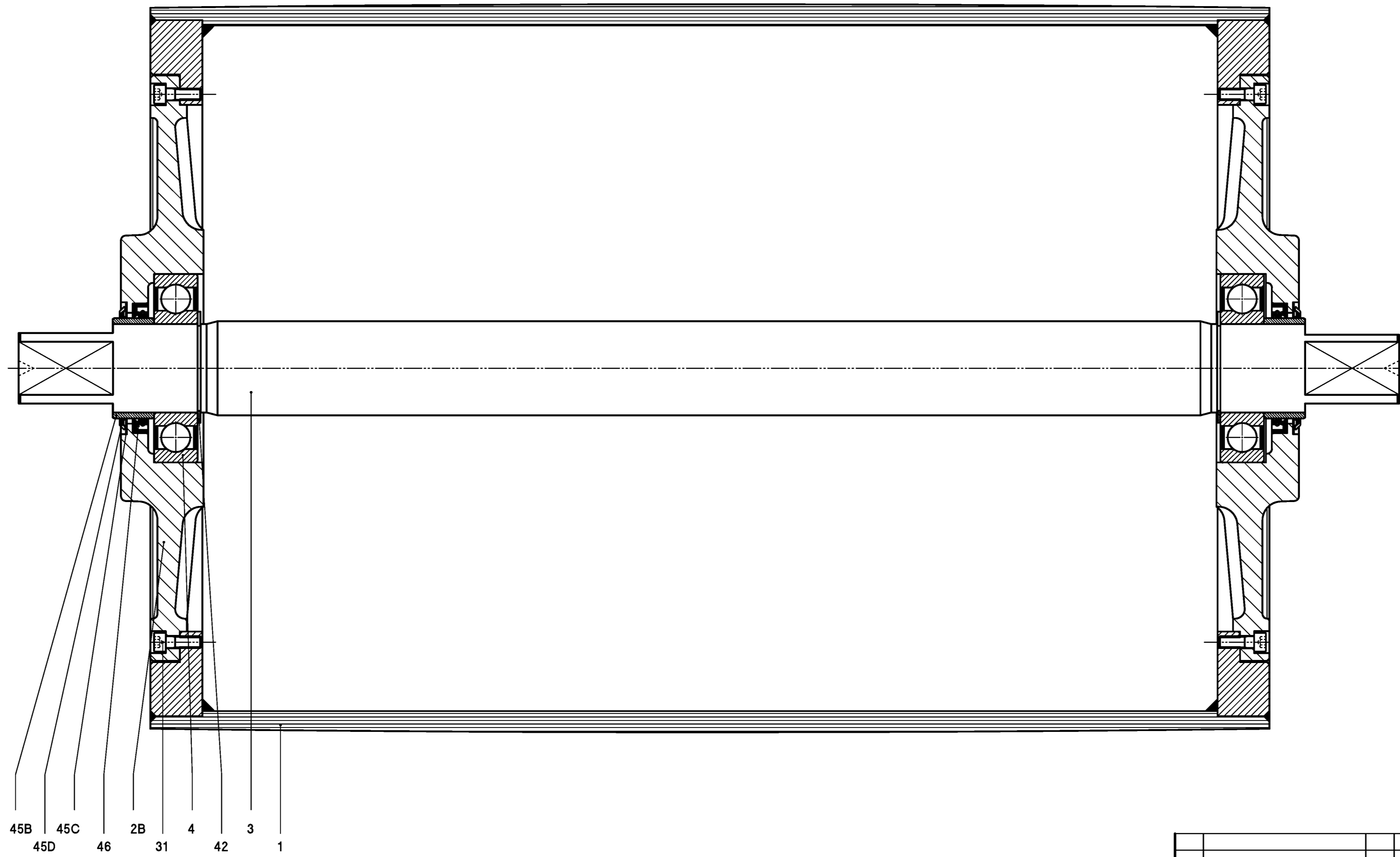
6 36V 32 2A 8Z 28 14A 3 37A 15 13 55 4 28 32 2B 7 27 24 52  
 33 31 42 29 14B 14C 17 14 1 37 30 29 31 36 16 51 24A 50

45A 45C 34 9 10 12 38 55 58 41 18 45C 45B 53 23  
 45D 46 35 18 39 11 44 43 54 59 47 46 45D 20 20A

- |                   |                      |                       |                   |                      |
|-------------------|----------------------|-----------------------|-------------------|----------------------|
| 1 Shell           | 14 Rotor             | 27 Setscrew           | 37 A Ballbearing  | 47 Shim              |
| 2 A Endflange     | 14 A/B Insert pinion | 28 Setscrew           | 38 Ballbearing    | 50 Seal              |
| 2 B Endflange     | 14C Spiral pin       | 29 Key                | 39 Needlebearing  | 51 Junctionbox       |
| 3 Gearinghousing  | 15 Threaded Rod      | 30 Nut                | 41 Locking disc   | 52 Junctionbox cover |
| 4 Motorflange     | 16 Cable passage     | 31 Int. Hex screw     | 42 Circlip        | 53 Blindstop         |
| 6 Shaftend        | 17 Spiral pin        | 32 Bonded seal        | 43 Circlip        | 54 Key               |
| 7 Hollow Shaft    | 18 Gasket            | 33 Int. Hex screw     | 44 Circlip        | 55 Backstop          |
| 8 Z Internal gear | 20 Terminalboard     | 34 Fillerplug         | 45 A Bearing race | 57 Dataplate         |
| 9/10 Pinion       | 20 A Cyl. Head screw | 35 Washer             | 45 B Bearing race | 58 Circlip           |
| 11 Gear           | 23 Star washer       | 36 Ballbearing        | 45 C Shim plated  | 59 Spiral pin        |
| 12 Distance ring  | 24 Star washer       | 36 V Cylinder bearing | 45 D Gammaring    |                      |
| 13 Stator         | 24 A Star washer     | 37 Ballbearing        | 46 Oilseal        |                      |

~ onbewerkt	Amerikaanse	
v ruw bewerkt	Projectie	
vv glad bewerkt	MAATTOLERANTIES VOLGENS NEN 2365	
vvv fijn bewerkt		
vvv gestepen	Schaal: 1 : 2	Datum
vvv gehoord	Getekend: H.d.D.	18-10-04
vvv gekapt	Gez.: _____	
Wijz. Omschrijving		Dat. Par. B.V. BS:
Materiaal: _____ Benaming: <b>DRUMMOTOR</b>		
<b>VAN DER GRAAF B.V.</b> VOLLENHOVE (+31(0)527-241441) HOLLAND		Formaat: A1 Tekeningnr.: TM620A75_00_Z

Deze tekening is eigendom van VAN DER GRAAF B.V. Inzake vermen-  
 ding, vernoeming en openbaarmaking aan derden is strafbaar.



- |     |                |      |              |
|-----|----------------|------|--------------|
| 1   | Shell          | 42   | Circlip      |
| 2 B | Endflange      | 45   | Bearing race |
| 3   | Shaft          | 45 C | Shim plated  |
| 4   | Ballbearing    | 45 D | Gammaring    |
| 31  | Int. Hex screw | 46   | Oilseal      |

		~ onbewerkt	Amerikaanse		
		v ruw bewerkt	Projectie		
		vv glad bewerkt	MAATTOEGEVINGEN VOLGENS NEN 2365		
		vvv fijn bewerkt	Schaal: 1 : 2		Datum
		vvv geslepen	Getekend: H.d.D.		18-10-04
		vvv gehoord	Gez.: BS:		
		vvv gekapt			
Wijz. Omschrijving	Dat. Par.	B.V.	BS:		
Materiaal:		Benaming: <b>DRUMMOTOR</b>			
<b>VAN DER GRAAF B.V.</b> VOLLENHOVE (+31(0)527-241441) HOLLAND		Formaat: <b>A1</b>	Tekeningnr.: <b>KT620A75_00</b>		
<small>Deze tekening is eigendom van VAN DER GRAAF B.V. Inzake vermen-          ings, verspreiding en openbaarmaking aan derden is strafbaar.</small>					